

**HEAT  
SEALING  
UPDATE  
2006**

**Glaciar Perito Moreno, Parque Nacional Los Glaciares, Patagonian Andes, Argentina.**

One of nature's biggest natural phenomena: Over the eons glaciers have gouged valleys, altered sea levels and influenced the climate. Scientists believe much of today's landscape was produced by ice age glaciation.

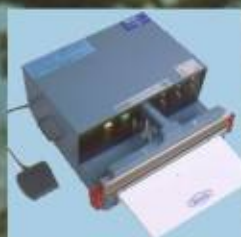
# Venus<sup>®</sup> . . . *naturally the biggest in Heat Sealing*



BENCHTOP



HAND HELD



AUTOMATIC



PEDESTAL



MAGNETIC  
HOLD-DOWN

# BENCHTOP

## Venus VHIB

The original and most popular VHIB. Made by the originators of the 'scissors' bench sealer configuration. Choose from 100, 200, 300 and 400mm sealing lengths with 2mm wide seal and automatic timer (0.2 to 1.3 seconds). For sealing polypropylene and polythene bags and tubing. Options include VHIB/C 200 and VHIB/CI 300 with cutter.



VHIB 400

VHIB/CI 300

VHIB 300

VHIB/C 200

VHIB 200

VHIB 100

## Venus VHIB III

The medium priced VHIB III has superior long-life element terminals and consumes power only when the sealing arm is depressed. Choose from 100, 200, 300, 400, 450 and 600mm sealing lengths with 2mm wide seal and automatic timer. 200C and 300C models have a cutter; 205C and 305C have a cutter and 5mm wide seal. The 209C produces a strong, airtight, 10mm wide seal on autoclave (sterilisation) bags; it has more power (600watts) a larger transformer and grid-textured silicon rubber upper seal pad.



VHIBL III 600

VHIBL III 450

VHIB III 400

VHIB III 300C

VHIB III 300

VHIB III 209C

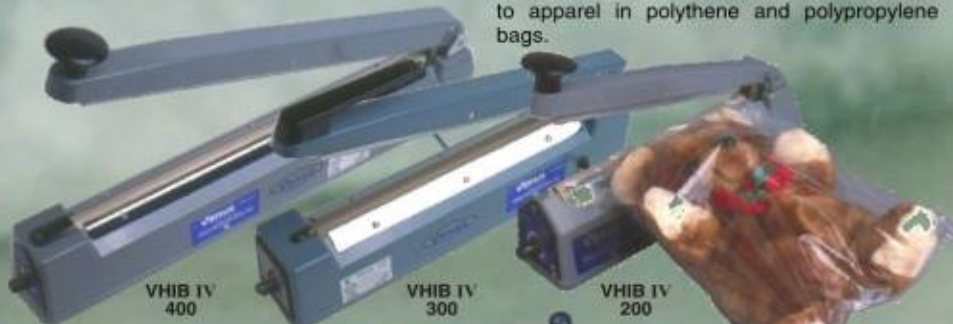
VHIB III 205C

VHIB III 200

VHIB III 100

## Venus VHIB IV

The VHIB IV is the latest and lowest priced addition to the popular Venus VHIB line of benchtop impulse heat sealers. Choose from 200, 300 and 400mm seal lengths all with 2mm wide seal and automatic timer (0.2 to 1.5 seconds) with solid state (SCR) Thyristor relay for greater efficiency, less servicing and longer life. The easy, economical and attractive way to package a wide variety of products from foods to apparel in polythene and polypropylene bags.



VHIB IV 400

VHIB IV 300

VHIB IV 200

## Venus FILM RACK

A twin roller base with film separator for the smooth dispensing of poly tubing or centrefolded shrink film. Used with Venus heat sealers and hot air guns to produce sealed poly bags or attractive shrink packaging. Available in 4 sizes to suit maximum film widths of 250mm, 330mm, 457mm and 610mm.



300mm FILM RACK

450mm FILM RACK

Venus 450mm Film Rack with VHIB III 300C

## Venus VHIB III

VHIBIII 300HBP, seal length 300mm  
VHIBIII 450HBP, Seal length 450mm  
Impulse sealers designed for sealing articles that are too heavy to move, irregular shaped items, and for making seals in awkward positions, eg: dust and moisture proofing.  
\*Seals polythene and polypropylene bags.  
\*Seal width: 2mm.  
\*Seal thickness: Up to 2 x 100 microns.  
\*Separate transformer with 2.5 metre lead.  
\*Seal time control.

## Venus VHSBIII 300

The easy lever action benchtop VHS. Constant heat complete with temperature gauge, Top and bottom Teflon coated sealing jaws, both with safety guards. Beep sounds when seal complete.  
\*Seals polypropylene, cellulose, foil or laminate bags  
\*Seal length: 300mm  
\*Seal width: 15mm  
\*Seal thickness: Up to 2 x 550 microns



## Venus SEALBOY

Venus Sealboy seals heavy gauge polythene and polypropylene bags and tubing up to 2 x 250um thick. 235mm and 320mm seal lengths. All have timers except the basic Sealboy 235. Model options include cutter, print seal and twin seal.

## Venus MINI 300

Hand or foot pedal operation. Seals polythene bags or film up to 2 x 150um thick. Seal length 300mm. Seal width 1.5mm, with timer and optional work table.



## Venus FUTURA JUNIOR

For sealing polythene and polypropylene bags up to 2 x 150um thick. Seal length 300mm Seal width 1mm. Constant heat with three settings: low, medium, high.



## Venus SEALETTE

For sealing polythene and polypropylene bags up to 2 x 250um thick. Seal length 160mm. Seal width 1.25mm.



## FOOT OPERATED

### Venus SUPER SEALMASTER

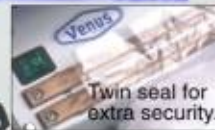
The Venus Super Sealmasters with the more efficient angled sealing lip, seal polythene and polypropylene bags and tubing up to 2 x 250um thick. Available in 300, 420 and 620mm sealing lengths. All models include foot pedal, timer and cutter. 300 SA/TW and 421 TW have Twin seal for extra security.

Venus SEALMASTER. The original Sealmasters are also still available in 230, 420 and 580mm sealing length. See the Heat Sealer Selection Guide for specifications and options

SUPER SEALMASTER 620 SA

SUPER SEALMASTER 421 TW

SUPER SEALMASTER 300 SA



Twin seal for extra security.

## MAGNETIC HOLD-DOWN

### Venus VHIBM III

Now a VHIB with magnetic hold-down! 300mm seal length with choice of seal widths: VHIBM III 300C (2mm), VHIBM III 305C (5mm). Both models have cutter, automatic timer (0.2 to 1.3 seconds) and cool down timer (0.2 to 1.3 seconds).

Magnetic hold-down



VHIBM III 305C

### Venus MAGNETA

Just a light touch with fingertips or foot pedal is all it takes for a strong and consistent seal every time. Choose from 300, 420, 620, 820 and 1020mm sealing lengths.

Magneta's powerful automatic magnetic hold-down does all the work. Seals polythene, polypropylene and laminate bags or tubing up to 2 x 250um thick. All models include a timer, cutter and optional foot pedal. Magneta 621, 820 and 1020 feature a cool-down cycle. Options include: Magneta 300MGP, 421MGP and 620MGP with print seal, Magneta 421SS and 621SS stainless steel, and Magneta 421MG/TW with twin sealing.

### Magneta Motor

A gentle touch with fingertips or foot pedal closes the electrically powered jaws. Then the powerful magnetic hold-down keeps the jaws closed while the sealing bar delivers the precise amount of heat needed for a strong and consistent seal every time. Both models include a seal time control, sliding cutter and electric foot pedal.

\*Seals polythene, polypropylene and laminate bags or tubing.  
\*Seal width: 3mm.  
\*Seal thickness: Up to 2 x 250 microns.  
MGM421, seal length 420mm.  
MGM621, seal length 620mm.

\*Tray and stand optional.



MAGNETA 1020 MG

Embossed print seal

MAGNETA 621 MG/P

MAGNETA 421 MG/TW

MAGNETA 421 SS



Twin seal for extra security.

## SPECIAL PURPOSE

### Venus CORNER CRIMPER 772

A lightweight, plier action sealer for welding the lids to plastic containers: punnets of berries, nuts etc. Heat settings: Low 180 C and High 210 C. Size: 130mm x 240mm x 40mm. Weight: 300g. Seals PVC and P.P.

### Venus TT300 CELLO SEALER

Seals cellulose, heavy film, laminates, coated foils and PP up to 2 x 100um thick. Pneumatic foot switch operation with built-in compressor. Seal width 10mm. Sealing length 300mm. Constant heat with adjustable temp. Foot operated.



### Venus HAND IRON

The fast way to seal irregular shaped packages. Three temperature settings and Teflon coated sealing head. Suitable for polythene, polypropylene and cellulose films. Sealing surface 68mm x 23mm.

### Venus PLATE SEALER

The flat Teflon coated surface allows you to seal awkward and irregular shaped packages in polythene, polypropylene and cellulose. The thermostat control guarantees exact temperature.

### Venus 450 CLING FILM DISPENSER

Produces a pilfer-proof, firmly wrapped and sparkling package. Retains freshness and adds sales appeal to fruit, vegetables, pastries etc. After wrapping in Venus cling film the film is cut by the hot cutting bar which is concealed by a safety guard. The product is then placed on the warming tray which seals the film. Also 451 HD, heavy duty model available.

### Venus LAMINATING MACHINES

Add a touch of class to business presentations, graphics, photographs, price lists, menus, business cards etc. Choose from 2 sizes: VH160 for items up to 160mm wide and VH310 for items up to 310mm wide. Use Venus PVC pouches, 100 per pack: 65mm x 95mm x 150um thick with rounded corners and 260mm x 300mm x 80um thick.



# HAND HELD

## Venus FUTURA

Three temperature settings (not FP POL). Maximum seal length 150mm. Optional Foot Pedal Kit with chain and clamps.



**FP POL** For sealing light to medium polythene bags up to 2 x 150um thick. Single heated jaw makes 2mm wide seal.

**FP CEL** For sealing cellulose films, waxed papers and foil laminates up to 2 x 200um thick. Twin heated crimp seal jaws make a strong 10mm wide seal.

**POLY TW** For sealing medium to heavy gauge polythene bags up to 2 x 250um thick. Twin heated jaws make a 2mm wide seal.

**BARRIER** For sealing cellulose, foil or paper laminates up to 2 x 200um thick. Seal width 10mm.



Optional foot pedal kit.

## Venus SUPER POLY

For extra thick bags. The Venus Super Poly impulse sealers have an easy plier action. A separate transformer and a 3.5 metre lead allow complete portability for jobs that are too big to move about. Seals polythene, polypropylene and laminates up to 2 x 250um thick. Choose from 280, 380 and 630mm sealing lengths.

### SUPER CELLO

Super Cello 400, seal length 400mm.

Super Cello 300, seal length 300mm.

**SUPER POLY 280**

**SUPER POLY 380**

Constant heat, plier action sealers for jobs that are too big to move about. The 4.5 metre lead between transformer and sealer allows you to take Super Cello to the job.  
 \*Seals cellulose, heavy film, laminates, coated foils and wax coated papers.  
 \*Sealing lengths: 300mm and 420mm.  
 \*Seal thickness: Up to 2 x 100 microns.  
 \*Seal width: 10mm.  
 \*Temperature adjustable from 60°C to 250°C.



The separate transformer is the key to the extremely lightweight plier action sealing jaws.

# WALL MOUNTED

## Venus PRONTO

Designed for confectioners, chemists and hardware stores, the Pronto's ingeniously designed jaw mechanism allows the bag to be held upright with both hands. Seals polythene and polypropylene up to 2 x 200um thick. Available in 255mm and 420mm seal lengths with timer and optional print seal.

**PRONTO 420P WITH PRINT SEAL**

**PRONTO 255A WITH BENCH MOUNTING STAND (OPTIONAL)**



Embossed print seal

## Venus SHOP SEALERS

Wall or bench mounted impulse sealer with seal time control and stainless steel casing. Seals bags in the upright position to prevent spillage. Suitable for sandwich bars, pharmacies, confectioners, hardware stores.

\*Seals polythene and polypropylene. \*Seal width: 2mm or 5mm. \*Seal thickness: up to 2 x 100 microns.



VHIS250, seal length 250mm, seal width 2mm. VHIS255, seal length 250mm, seal width 5mm.

VHV200, seal length 200mm, seal width 2mm and 3mm. VHV300, seal length 300mm, seal width 2mm and 3mm.



# HEAVY DUTY

**ULTIMATE HSP 600**

**AUTOMASTER AM 600**

## Venus ULTIMATE and AUTOMASTER

The Ultimate is used in hospitals for an airtight seal on sterilisation bags (Autoclave paperfilm). It also seals polythene, polypropylene and some PVC and polyamide films. Internal air compressor to operate high pressure twin heated jaws. Also features electronic timer, cool-down cycle, cutter, safety guard, and electronic foot switch operation. Similar in design, but with single element, the Automaster seals polythene, polypropylene and laminated foils. Both are excellent performers in harsh environments where dust, moisture, powder coatings etc can cause problems. They produce a strong 5mm wide seal using material up to 2 x 250um thick.

# Venus VHVD Venus VHIFT

## ORIGINAL VHIFT

A heavy duty impulse sealer for polythene and polypropylene bags up to 2 x 300um thick. Automatic or electronic foot switch operation with timer and cool-down cycle.

Model options.  
 2mm wide seal: VHIFT 452 and VHIFT 602.  
 5mm wide seal: VHIFT 455 and VHIFT 605.

**VHIFT 602**

## Venus VHIFT III

A stronger wider seal on thicker bags. Extra power and model options allow you to create a 2mm, 5mm or 10mm wide seal on polythene and polypropylene bags up to 2 x 500um thick.

The extra power and wider element wire handle the most difficult sealing jobs, even where powders or liquids line the bags. Bench mounted with automatic electronic foot switch operation, timer, and cool-down cycle.

Model Options.  
 2mm wide seal: VHIFT III 302, VHIFT III 452 and VHIFT III 602.  
 5mm wide seal: VHIFT III 305, VHIFT III 455 and VHIFT III 605.  
 10mm wide seal: VHIFT III 309 and VHIFT III 459.  
 10mm wide double seal: VHIFTD 309, VHIFTD 459, VHIFTD 609.

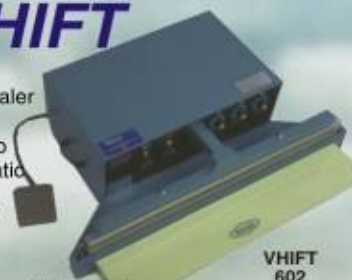
**VHIFT III 455**

Adjustable head impulse sealers. The sealing head can be rotated and set in 5 different positions, from horizontal to vertical, to suit a variety of packaging applications and conveyor systems. Complete with seal time control, foot pedal and tray.

\*Seals polythene and polypropylene bags.  
 \*Seal width: double 5mm or double 10mm.

\*Seal thickness: Up to 2 x 200 microns.

Model Options:  
 5mm wide double seal: VHVD 305, VHVD 455, VHVD 605.  
 10mm wide double seal: VHVD 309, VHVD 459, VHVD 609.



# HEAT SEALER SELECTION GUIDE

Heat Sealer	Seal Jaw length mm	Seal width mm	Maximum thickness um	Film types	Impulse Constant heat	Power output watts	Timer Heat time seconds	Timer Cooledown seconds	Weight Kg	Cutter	Foot pedal	Other Options	Standard features
Automaster AM 600	600	5	2 x 250	PE PP Foil laminates	Impulse	1350	0 to 3	0 to 3	32	Yes	Yes		Pneumatic. Adjustable cooling time.
Corner Crimper 772	10	5		PVC PP	Const. heat		No	No	0.3	No	No		2 heat settings
Futura BARRIER	150	10	2 x 200	Cello Laminates	Const. heat	50	No	No	0.5	No	Optional	Foot pedal/chain	3 position heat switch. Flat seal.
Futura CELLO PP CEL	150	10	2 x 200	Cello Foil laminates	Const. heat	50	No	No	0.55	No	Optional	Foot pedal/chain	3 position heat switch. Twin heated jaws.
Futura JUNIOR	300	1	2 x 150	PE PP	Const. heat	25	No	No	3.6	No	No		Low, med., high heat setting. 0 to 200°C
Futura POLY PP POL	150	2	2 x 150	PE	Const. heat	25	No	No	0.5	No	Optional	Foot pedal/chain	
Futura TWIN POL TW	150	2	2 x 250	PE	Const. heat	50	No	No	0.5	No	Optional	Foot pedal/chain	3 position heat switch. Twin heated jaws.
Hand Iron	68 x 23 surface			PE PP Cello	Const. heat	80	No	No	1.5	No	No	Foot pedal/chain	3 position heat setting. Teflon coated.
Magneta 300 MG 300 MGP	300	3	2 x 250	PE PP Laminates	Impulse	500	0 to 2	No	13.2	Yes	Optional	Stand	Magn. hold down. 300 MGP has print seal with type set.
Magneta 300 MG TW	300	3	2 x 250	PE PP	Impulse	725	0 to 3	No	12.9	Yes	Yes	Stand	Magnetic hold down. Twin seal.
Magneta 421 MG 421 MGP	420	3	2 x 250	PE PP Laminates	Impulse	450	0 to 2	No	14.2	Yes	Optional	Stand	Magn. hold down. 421 MGP has print seal with type set.
Magneta 421 MG TW	420	3	2 x 250	PE PP Laminates	Impulse	625	0 to 2	No	14.2	Yes	Optional	Stand	Magnetic hold down. Twin seal.
Magneta 421 SS	420	3	2 x 250	PE PP Laminates	Impulse	450	0 to 2	No	14.2	Yes	Optional	Stand	Magnetic hold down. Stainless steel.
Magneta 621 MG 621 MGP	620	3	2 x 250	PE PP Laminates	Impulse	575	0 to 4	0 to 4	19.3	Yes	Optional	Stand	Magnetic hold down.
Magneta 621 SS	620	3	2 x 250	PE PP Laminates	Impulse	575	0 to 4	0 to 4	19.3	Yes	Optional	Enamel Stand	Magnetic hold down. Stainless steel.
Magneta 820 MG	820	3	2 x 250	PE PP Laminates	Impulse	850	0 to 4	0 to 4	26	Yes	Optional	Stand	Magnetic hold down.
Magneta 1020 MG	1020	3	2 x 250	PE PP Laminates	Impulse	700	0 to 4	0 to 4	32	Yes	Optional	Stand	Magnetic hold down.
Magneta MGM421	420	3	2 x 250	PE PP Laminates	Impulse	600-650	0 to 2	No	17	Yes	Yes		
Magneta MGM621	620	3	2 x 250	PE PP Laminates	Impulse	750-800	0 to 4	0 to 4	20	Yes	Yes		
Mini 300	300	1.5	2 x 150	PE	Impulse	300	0 to 3	No	6.2	No	Optional	Work table	Hand or foot operation.
Multicover 849	1400	3	4 x 200	PE	Impulse	1500	0 to 3.5	No	68	Yes	No		Separate power box. Work stand.
Plate Sealer	245 x 160 area			PE PP Cello	Const. heat	400	No	No	3	No	No		Thermostat control. Teflon coated.
Pronto A 255	250	2	2 x 200	PE PP	Impulse	235	0 to 3	No	5.2	No	No	Hot Pronto Stand	Wall mounted.
Pronto A 420 A 420P	420	2	2 x 200	PE PP	Impulse	325	0 to 3	No	8.4	No	No	Hot Pronto Stand	Wall mounted. A 420P has printed seal with type set.
Sealboy 235 235 A 235 SA	235	2	2 x 250	PE PP	Impulse	210	0 to 3	No	5.5	No**	No	Twin seal	#235 has no timer. **235 SA has cutter.
Sealboy 320 SA	320	3.5	2 x 250	PE PP	Impulse	500	0 to 3	No	6	Yes	No	Twin seal	
Sealboy 235 SA/P	235	2	2 x 250	PE PP	Impulse	210	0 to 3	No	6	Yes	No	Twin seal	Print seal with type set.
Sealette	160	1.25	2 x 250	PE PP	Impulse	80	No	No	2.5	No	No		
Sealmaster 230 A	230	3	2 x 250	PE PP	Impulse	175	0 to 3	No	12	No	Yes		
Sealmaster 300 SA	300	3	2 x 250	PE PP	Impulse		0 to 3	No	13	Yes	Yes		Twin seal
Sealmaster 420 SA	420	3	2 x 250	PE PP	Impulse	375	0 to 3	No	16	Yes	Yes		Twin seal
Sealmaster 580 A	580	3	2 x 250	PE PP	Impulse	425	0 to 3	No	18	No	Yes		
Sealmaster 620 SA	620	3	2 x 250	PE PP	Impulse		0 to 3	No	19	Yes	Yes		Twin seal
Super Sealmaster 300 SA	300	3	2 x 250	PE PP	Impulse	500	0 to 3	No	12.9	Yes	Yes	Stand	
Super Sealmaster 421 SA	420	3	2 x 250	PE PP	Impulse	450	0 to 3	No	15.1	Yes	Yes	Stand	
Super Sealmaster 421 TW	420	3	2 x 250	PE PP	Impulse	625	0 to 3	No	15.1	Yes	Yes	Stand	Twin seal with cutting between seals.
Super Sealmaster 620 SA	620	3	2 x 250	PE PP	Impulse	500	0 to 3	No	19.1	Yes	Yes	Stand	
Super Poly 280	280	3	2 x 250	PE PP Laminates	Impulse	320	0 to 4	No	1.6	No	No		Separate transformer.
Super Poly 380	380	3	2 x 250	PE PP Laminates	Impulse	700	0 to 4	No	1.7	No	No		Separate transformer.
Super Poly 630	630	3	2 x 250	PE PP Laminates	Impulse	520	0 to 4	No	2	No	No		Separate transformer.
Super Cello 300	300	10	2 x 100	Cello Foil laminates	Const. heat	1000	No	No	1.25	No	No		
Super Cello 400	420	10	2 x 100	Cello Foil laminates	Const. heat	1460	No	No	1.35	No	No		
TT 300 Cello Sealer	300	10	2 x 100	Cello Foil laminates	Const. heat	440	No	No	15	No	Yes		Air operated. Built-in compressor.
Ultimate HSP 600	600	5	2 x 250	Polyamide Autoclave PE PP PVC Foils	Impulse	1450	0 to 3	3	35	Yes	Yes		Safety device protects fingers. Top and bottom element
VHII 160 Laminating Mach.	160		2 x 150	PVC	Const. heat	200	No	No	9.5	No	No		
VHII 310 Laminating Mach.	310		2 x 150	PVC	Const. heat	500	No	No	16	No	No		
VHIB 100	100	2	2 x 150	PE PP	Impulse	180	0.2 to 1.3	No	1.7	No	No		
VHIB 200	200	2	2 x 150	PE PP	Impulse	310	0.2 to 1.3	No	2.7	No	No		
VHIB 300	300	2	2 x 200	PE PP	Impulse	430	0.2 to 1.3	No	4.5	No	No		
VHIB 400	400	2	2 x 200	PE PP	Impulse	600	0.2 to 1.3	No	5.2	No	No		
VHIBL 1000	1000	2.7	2 x 250	PE PP	Impulse	1400	0 to 1.5	No	14.5	No	No		
VHIB/C 200	200	2	2 x 150	PE PP	Impulse	310	0.2 to 1.3	No	3.7	Yes	No		
VHIB/CI 300	300	2	2 x 200	PE PP	Impulse	400	0.2 to 1.3	No	4.5	Yes	No		
VHIB III 100	100	2	2 x 100	PE PP	Impulse	160	0.2 to 1.3	No	1.7	No	No		
VHIB III 200	200	2	2 x 100	PE PP	Impulse	260	0.2 to 1.3	No	2.5	No	No		
VHIB III 200C	200	2	2 x 100	PE PP	Impulse	260	0.2 to 1.3	No	4.3	Yes	No		
VHIB III 205C	200	5	2 x 300	PE PP	Impulse	260	0.2 to 1.3	No	4.5	Yes	No		
VHIB III 209C	200	10	2 x 175	PE PP Autoclave	Impulse	600	0.2 to 1.3	No	6	Yes	No		
VHIB III 300	300	2	2 x 250	PE PP	Impulse	380	0.2 to 1.3	No	4.4	No	No		
VHIB III 300C	300	2	2 x 250	PE PP	Impulse	380	0.2 to 1.3	No	5.4	Yes	No		
VHIB III 305C	300	5	2 x 300	PE PP	Impulse	380	0.2 to 1.3	No	6.3	Yes	No		
VHIB III 400	400	2	2 x 300	PE PP	Impulse	600	0.2 to 1.3	No	4.7	No	No		
VHIB III 300HBP	300	2	2 x 100	PE PP	Impulse	450	0.3 to 2.0	No	18	No	No		
VHIB III 450HBP	450	2	2 x 100	PE PP	Impulse	600	0.3 to 2.0	No	20	No	No		
VHIBL III 450	450	2	2 x 250	PE PP	Impulse	600	0.2 to 1.3	No	5.9	No	No		
VHIBL III 600	600	2	2 x 250	PE PP	Impulse	800	0.2 to 1.3	No	8.6	No	No		
VHIBM III 300C	300	2	2 x 250	PE PP	Impulse	380	0.2 to 1.3 0.2 to 1.3	5.4	Yes	No			
VHIBM III 305C	300	5	2 x 300	PE PP	Impulse	380	0.2 to 1.3 0.2 to 1.3	6.3	Yes	No			
VHIB IV 200	200	2	2 x 150	PE PP	Impulse	300	0.2 to 1.5	No	2.7	No	No		
VHIB IV 300	300	2	2 x 200	PE PP	Impulse	400	0.2 to 1.5	No	4.5	No	No		
VHIB IV 400	400	2	2 x 200	PE PP	Impulse	550	0.2 to 1.5	No	5.2	No	No		
VHIF 302	300	2	2 x 250	PE PP	Impulse	400	0.2 to 1.7	No	23	No	Yes		Adjustable height tray
VHIF 305	300	5	2 x 400	PE PP Laminates	Impulse	700	0.2 to 2.2	No	24	No	Yes		Adjustable height tray
VHIF 452	450	2	2 x 250	PE PP	Impulse	600	0.2 to 2.2	No	28	No	Yes		Adjustable height tray
VHIF 455	450	5	2 x 400	PE PP Laminates	Impulse	1000	0.2 to 2.2	No	29	No	Yes		Adjustable height tray
VHIF 602	600	2	2 x 250	PE PP	Impulse	800	0.2 to 1.7	No	34	No	Yes		Adjustable height tray
VHIF 605	600	5	2 x 400	PE PP Laminates	Impulse	1300	0.2 to 2.2	No	35	No	Yes		Adjustable height tray
VHIF 750	750	2	2 x 200	PE PP	Impulse	1100	0.2 to 1.7	No	23	No	Yes		
VHIF 900	900	2	2 x 200	PE PP	Impulse	1300	0.2 to 1.7	No	27	No	Yes		
VHIFC 602	600	2	2 x 200	PE PP	Impulse	800	0.2 to 2.0	No	28	Yes	Yes		
VHIF III 302	300	2	2 x 250	PE PP Laminates	Impulse	400	0 to 2	No	21.8	No	Yes		Adjustable height tray
VHIF III 452 P III 452	450	2	2 x 250	PE PP Laminates	Impulse	600	0 to 2	No	23.6	No	Yes		Adjustable height tray. P III 452 has print facility with type set.
VHIF III 602	600	2	2 x 250	PE PP Laminates Autoclave	Impulse	800	0 to 2	No	27.3	No	Yes		Adjustable height tray
VHIFD III 305	300	5	2 x 400	PE PP Laminates Autoclave	Impulse	650	0 to 2	No	24	No	Yes		Top and bottom element.
VHIFD III 452	450	2	2 x 250	PE PP Laminates	Impulse	1200	0 to 2	No	23.6	No	Yes		Top and bottom element.
VHIFD III 605	600	5	2 x 400	PE PP	Impulse	2400	0 to 2	No	28.6	No	Yes		Top and bottom element.
VHIFP III 302	300	2	2 x 250	PE PP Laminates	Impulse	440	0 to 2	No	21.8	No	Yes		Print facility. Type set.
VHIF IV 350	350	2	2 x 250	PE PP PVC	Impulse	1250	0 to 2.5	No	19	No	Yes		Adjustable height tray
VHIF IV 455	450	5	2 x 400	PE PP PVC	Impulse	1200	0 to 2.5	No	21	No	Yes		Adjustable height tray
VHIF IV 605	600	5	2 x 400	PE PP PVC	Impulse	1500	0 to 2.5	No	24.5	No	Yes		Adjustable height tray
VHIFT 452	450	2	2 x 300	PE PP	Impulse	600	0.2 to 3	1 to 8	20	No	Yes		Foot or auto operation.
VHIFT 455	450	5	2 x 500	PE PP	Impulse	1000	0.2 to 3	1 to 8	21	No	Yes		Foot or auto operation.
VHIFT 602	600	2	2 x 300	PE PP	Impulse	800	0.2 to 3	1 to 8	22	No	Yes		Foot or auto operation.
VHIFT 605	600	5	2 x 500	PE PP	Impulse	1300	0.2 to 3	1 to 8	23	No	Yes		Foot or auto operation.
VHIFD IV 458	450	8	2 x 400	PE PP	Impulse	1200							

