



Venus
BRAND

COFFEE
PACKAGING

COFFEE BAGS

Supplied in plain, ready-to-use formats, these matte coffee bags feature a high-barrier structure that protects against oxygen and moisture, are compatible with standard filling and heat-sealing processes, and are made from food-grade materials with strong seal integrity, making them suitable for both whole bean and ground coffee. See our full range of sizes in table on page 3.

Venus Coffee Bags are available in two proven material structures:

- **Kraft Paper** – matte finish with a classic appearance, making them ideal for artisan and specialty coffee ranges. Available in kraft, black & white.
- **Matte / Laminate** - (MOPP/PET/PE blend) For a clean, modern presentation. Available in matte black & matte white.



BOX BOTTOM BAGS

Brown Kraft



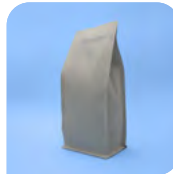
White Kraft



Black Kraft



Matte White



Matte Black

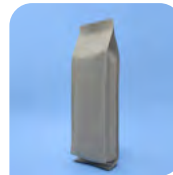


SIDE GUSSET BAGS

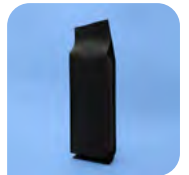
Brown Kraft



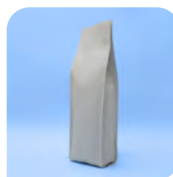
White Kraft



Black Kraft



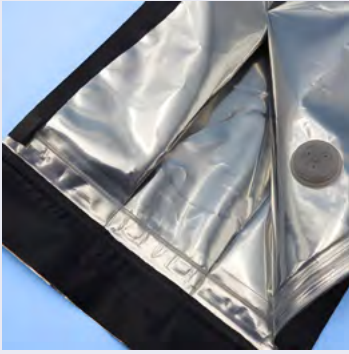
Matte White



Matte Black



WIPF Valve



Pull Tab Zipper



TECHNICAL INFORMATION

All stock bags are supplied:

- In plain, ready-to-use formats
- With a high-barrier laminate structure
- Protection against oxygen & moisture
- Compatible with standard filling and heat-sealing processes
- With a Swiss-made WIPF valve
- With a pull-tab zipper for easy opening
- Resealable for extended storage after opening
- Made from food grade materials
- With strong seal integrity
- Suitable for use with whole bean or ground coffee

CUSTOM LABELLING OPTION

Adding a custom label to plain stock coffee bags is an easy way to elevate your packaging and reinforce your brand. Labels provide space to display your logo, product name, roast details, or other key information, giving your coffee a professional and polished appearance.

They also offer flexibility for seasonal blends, limited editions, or promotional runs, without the expense of fully printed bags.

Digitally printed labels offer the convenience of short production runs with high quality and highly detailed labels to showcase your brand.



Custom label options

- Multiple colours
- Your design
- Choice of size
- Custom shapes

CUSTOM COFFEE BAG



Custom printed coffee bags do more than contain your product—they help sell it. With professional, eye-catching packaging, your brand stands out on crowded shelves while conveying quality and building customer trust. Custom printing lets you showcase your story, highlight key product features, and maintain a consistent, recognisable brand image. The right bag design ensures your coffee doesn't just get noticed—it gets chosen.

Features that can be included on custom bags are:

- UV Effect
- Foiling
- Die Cut

View more information on www.venuspack.com.au or contact sales@venuspack.com.au to discuss your design.

COFFEE BAG SIZING & OPTIONS

250g Box Bottom Pouch - Pull Tap Zipper and WIPF Valve

Size	Bag type	Colour	Thickness	Bags per pack	Packs per carton	Order code
110mm (W) x 210mm (H) x 80mm	Kraft	Brown	162um	50	18	PSC02501
		White	152um	50	18	PSC02502
		Black	172um	50	18	PSC02503
	Matte	Black	137um	50	10	PSC02504
		White	137um	50	18	PSC02505

500g Box Bottom Pouch - Pull Tap Zipper and WIPF Valve

Size	Bag type	Colour	Thickness	Bags per pack	Packs per carton	Order code
135mm (W) x 270mm (H) x 80mm	Kraft	Brown	162um	50	12	PSC05001
		White	152um	50	12	PSC05002
		Black	172um	50	12	PSC05003
	Matte	Black	137um	50	13	PSC05004
		White	137um	50	13	PSC05005

1kg Box Bottom Pouch - Pull Tap Zipper and WIPF Valve

Size	Bag type	Colour	Thickness	Bags per pack	Packs per carton	Order code
145mm (W) x 340mm (H) x 100mm	Kraft	Brown	162um	50	10	PSC10001
		White	152um	50	10	PSC10002
		Black	172um	50	10	PSC10003
	Matte	Black	137um	50	10	PSC10004
		White	137um	50	10	PSC10005



500g Quad seal side gusset pouch - WIPF Valve

Size	Bag type	Colour	Thickness	Bags per pack	Packs per carton	Order code
100mm (W) x 360mm (H) x 60mm	Kraft	Brown	162um	50	14	PSC15001
		White	152um	50	14	PSC15002
		Black	172um	50	14	PSC15003
	Matte	Black	137um	50	16	PSC15004
		White	137um	50	16	PSC15005

1kg Quad seal side gusset pouch - WIPF Valve

Size	Bag type	Colour	Thickness	Bags per pack	Packs per carton	Order code
140mm (W) x 390mm (H) x 80mm	Kraft	Brown	162um	50	10	PSC20001
		White	152um	50	10	PSC20002
		Black	172um	50	10	PSC20003
	Matte	Black	137um	50	10	PSC20004
		White	137um	50	10	PSC20005